

# GUIDE Growing up in Digital Europe

## The GUIDE Project and Its Potential to Enhance Child Wellbeing Across Europe

Gary Pollock, Manchester Metropolitan University.,  
CoDirector of GUIDE



 @GUIDEcohort

Horizon GA 613368, GA 777449,  
GA 101008589, GA 101078945



# Orientation

- The case for GUIDE
- Research Design
- Pilot studies
- Next steps



# Why we need GUIDE

**NEPS**  
National Educational Panel Study  
Germany

**ined**   
INSTITUT NATIONAL  
D'ÉTUDES DÉMOGRAPHIQUES

ELFE: French  
Longitudinal Study of  
Children

**CHILD OF THE  
NEW CENTURY**   
United Kingdom

**TRÆ**  
Transitions from  
Education to  
Employment, Switzerland

**moba**  
Mother and Child  
Cohort Study  
Norway

**bib** *We are family*  
BORN IN BRADFORD

 **COHORT '18**  
Growing Up in Hungary  
Growing Up in  
Hungary



**Growing Up  
in Ireland**  
National Longitudinal  
Study of Children

 **STATENS  
SERUM  
INSTITUT**  
Danish National  
Birth Cohort Study

 **Generation R**  
Netherlands

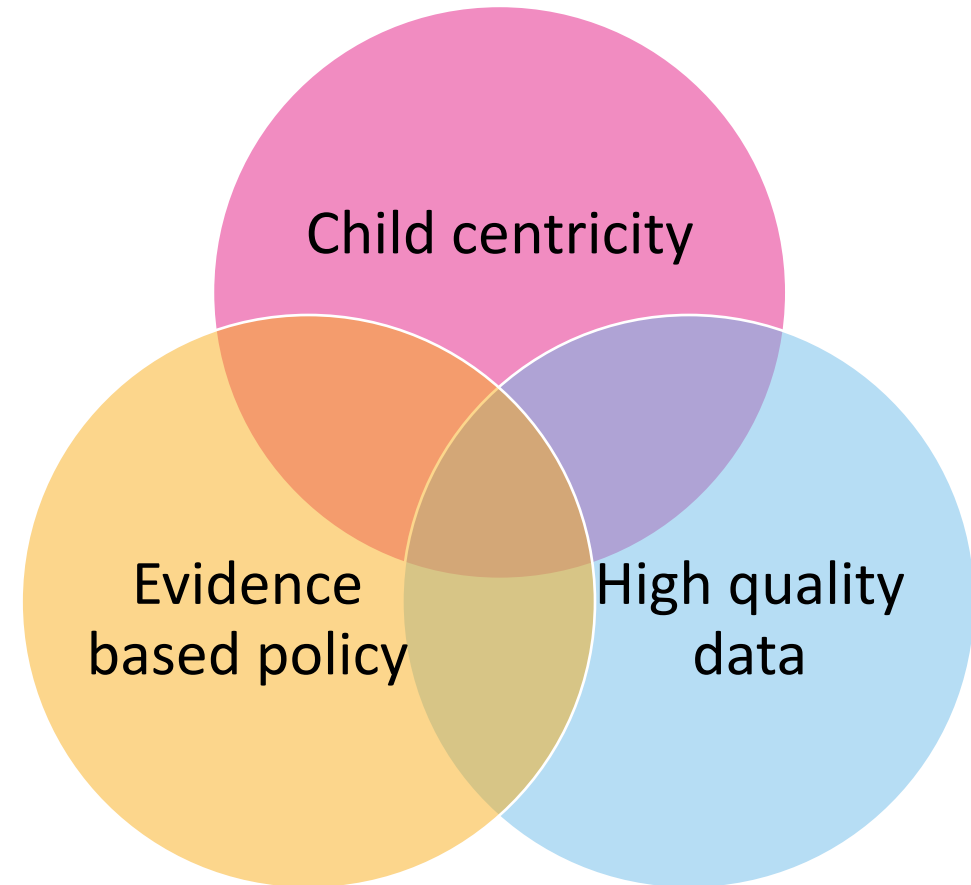


United Kingdom

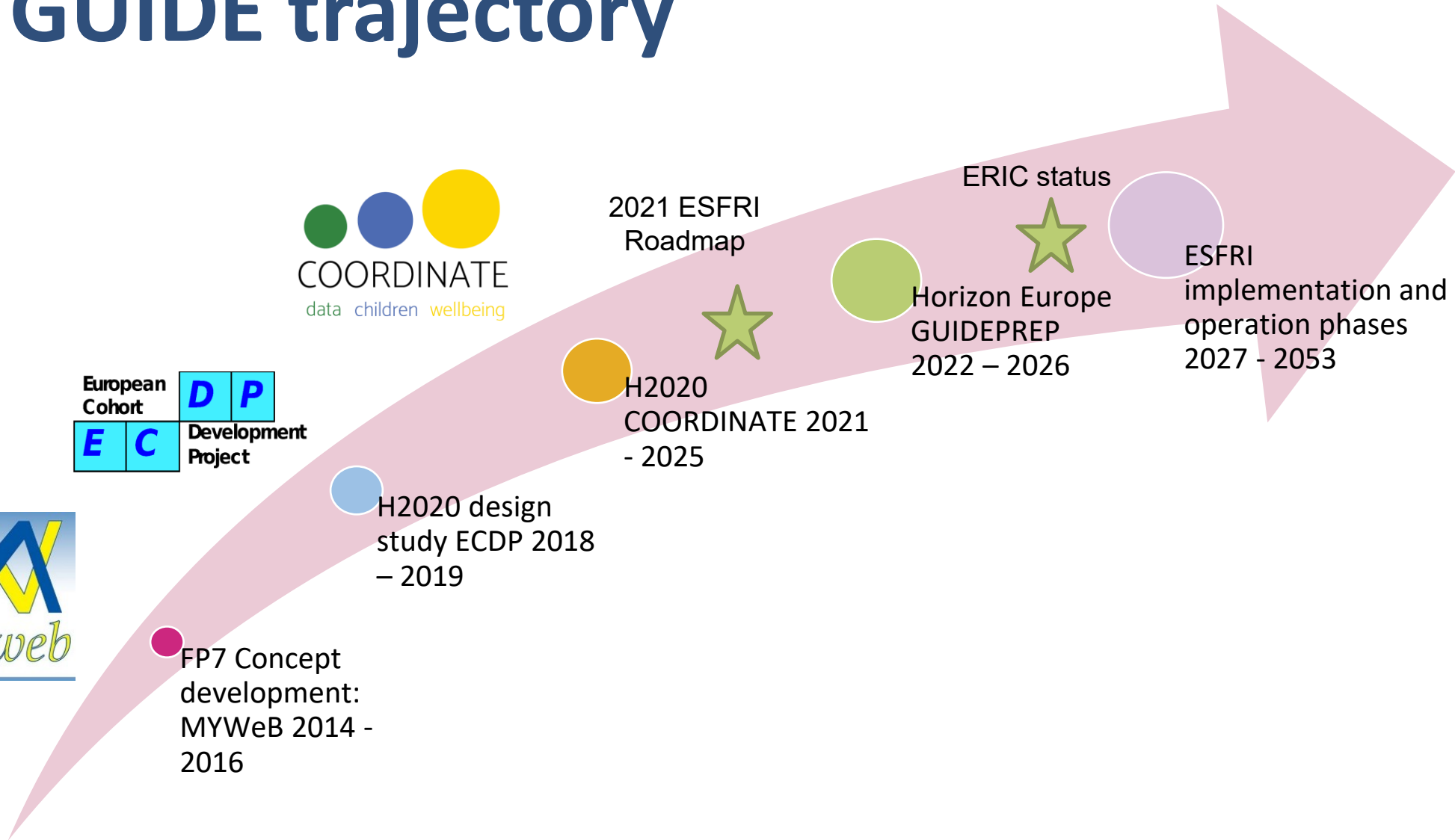


# EU research funding call 2013

“Is a Europe wide longitudinal survey of child wellbeing desirable and feasible?”



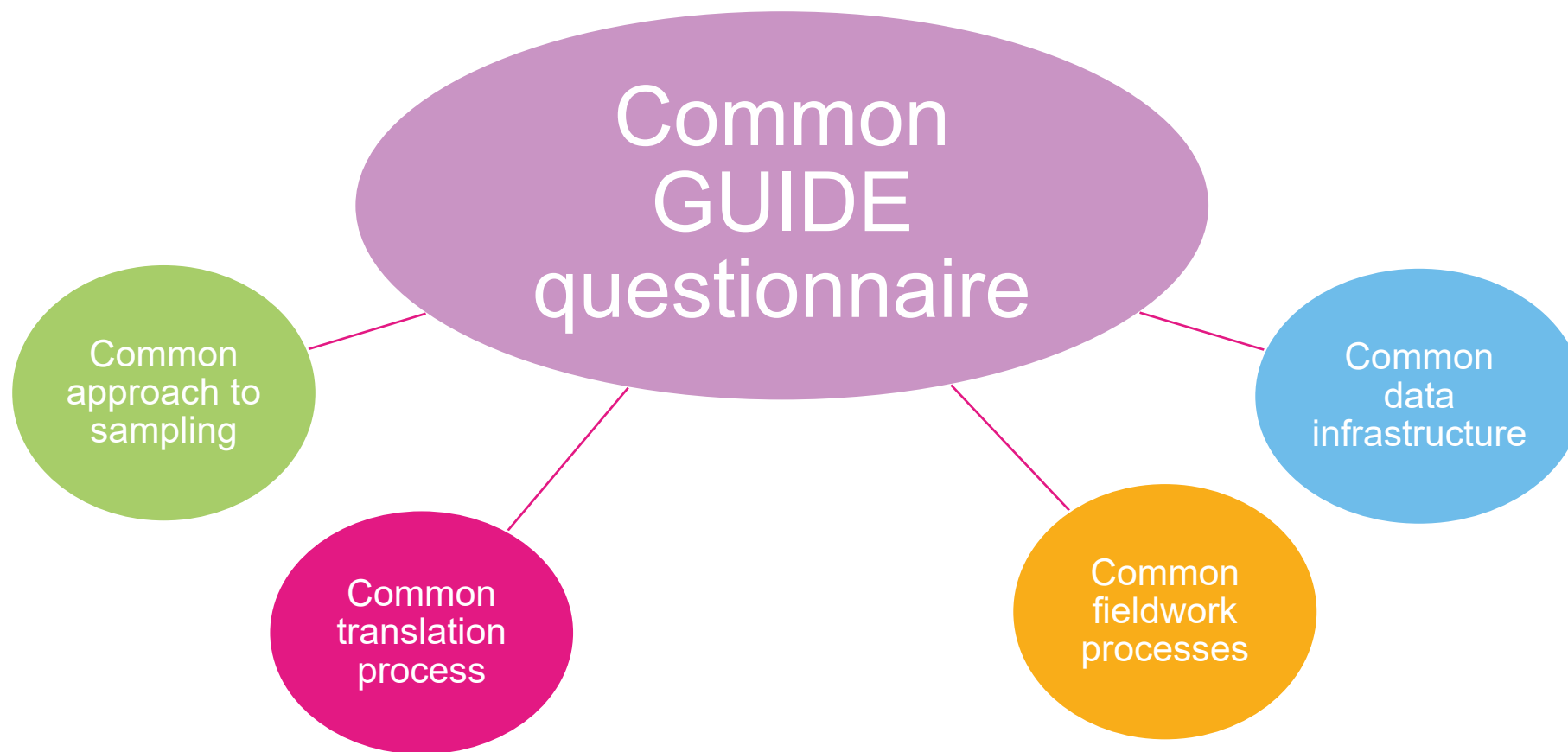
# GUIDE trajectory







# Common questionnaire



# GUIDE methodology

Questionnaire content is **policy focused**

**Input harmonized** for comparative analysis

- Common questionnaires
- Common data collection procedures and time frame

**Child centric:** Children and young people involved in the design

**Accelerated cohort** design

- Cohort 1: 8-year-old children and their main carer
- Cohort 2: 9-month-old children and their main carer

Nationally **representative** samples

**Open access** to data



# Sample design

## Probability sample

- For each cohort, a sample of children resident in the country within the relevant **one-year age** range

## Sample design

- Varies between countries and cohorts, to recognise **national availability**, adhering to common principles and parameters

## Common prescribed level of statistical precision

- For each national sample design (which will depend on sample size, stratification, selection probabilities and clustering)

## Sampling principles, guidelines and parameters

- agreed by the central team (**Sample Scientific Group**), who will work with each national team to develop and approve an acceptable sample design





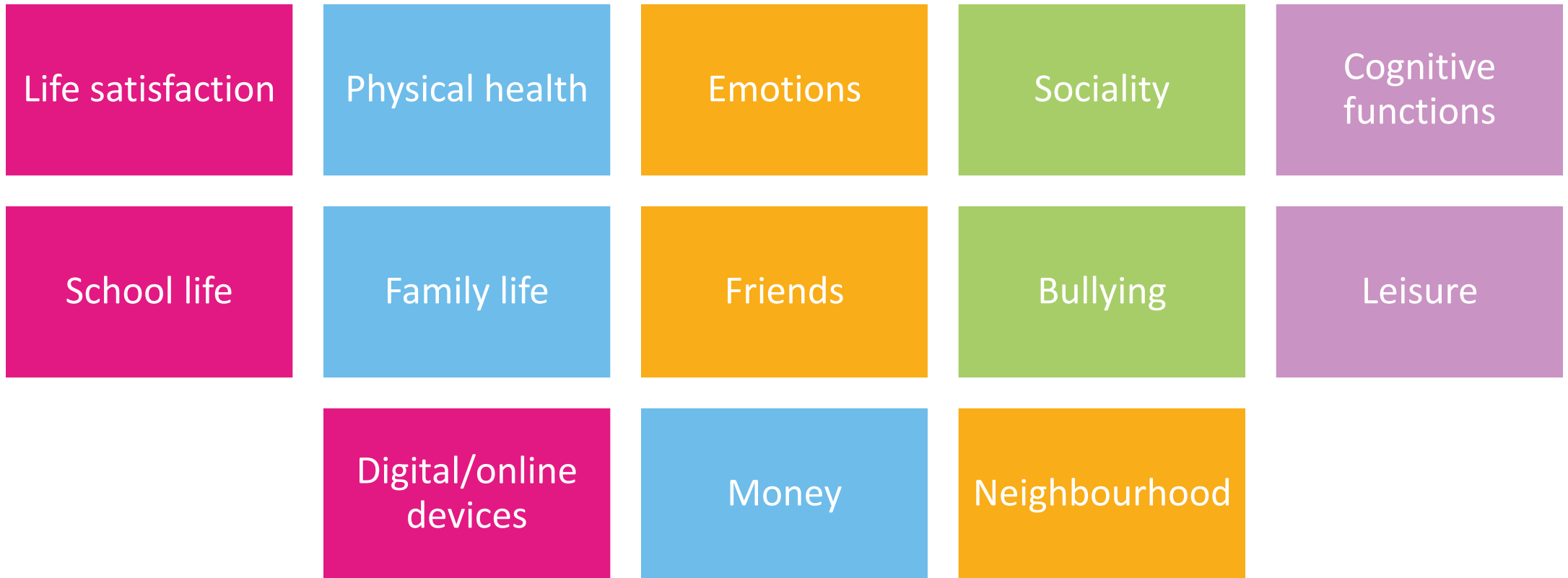
# Sample size

**Attrition rates** will differ over a 25-year period for both cohorts and between countries. In setting the **initial target sample sizes** for each cohort it is necessary to anticipate likely levels of attrition in such a way as to ensure that the **later data collection waves retain sufficient respondents for inferential statistical analysis**

Wave 1 **minimum effective sample size** should be set at **10,000** for the birth cohort (C2) and **8,000** for the childhood cohort (C1), with a waiver for the **smallest countries**, where demographic data will inform effective sample sizes



# Questionnaire content: children

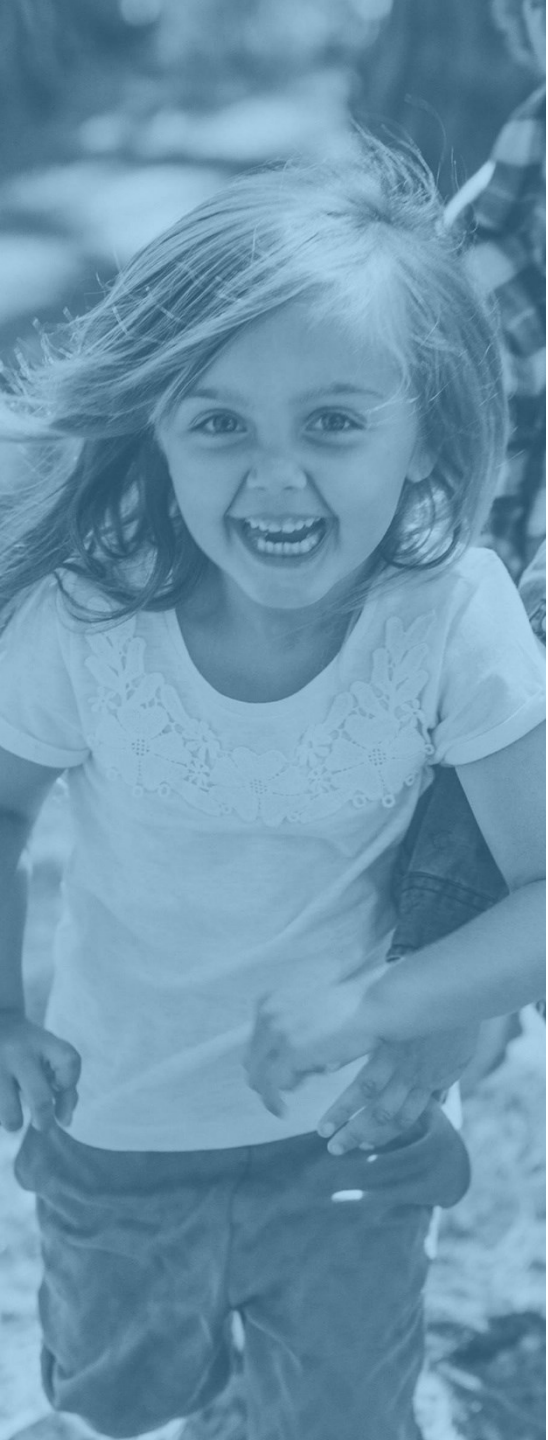


# Questionnaire content: parent/carer

Household grid	Demographics	Employment	Housing	Pregnancy
Child health	Child education (C1)	Child activities	Parenting (C1)	Baby development (C2)
Childcare	Baby relationships (C2)	Parent health	Partnerships (SC)	Life satisfaction (SC)







# GUIDE Pilot

@GUIDEcohort | Horizon GA 613368, GA 777449, GA 101008589, GA 101078945

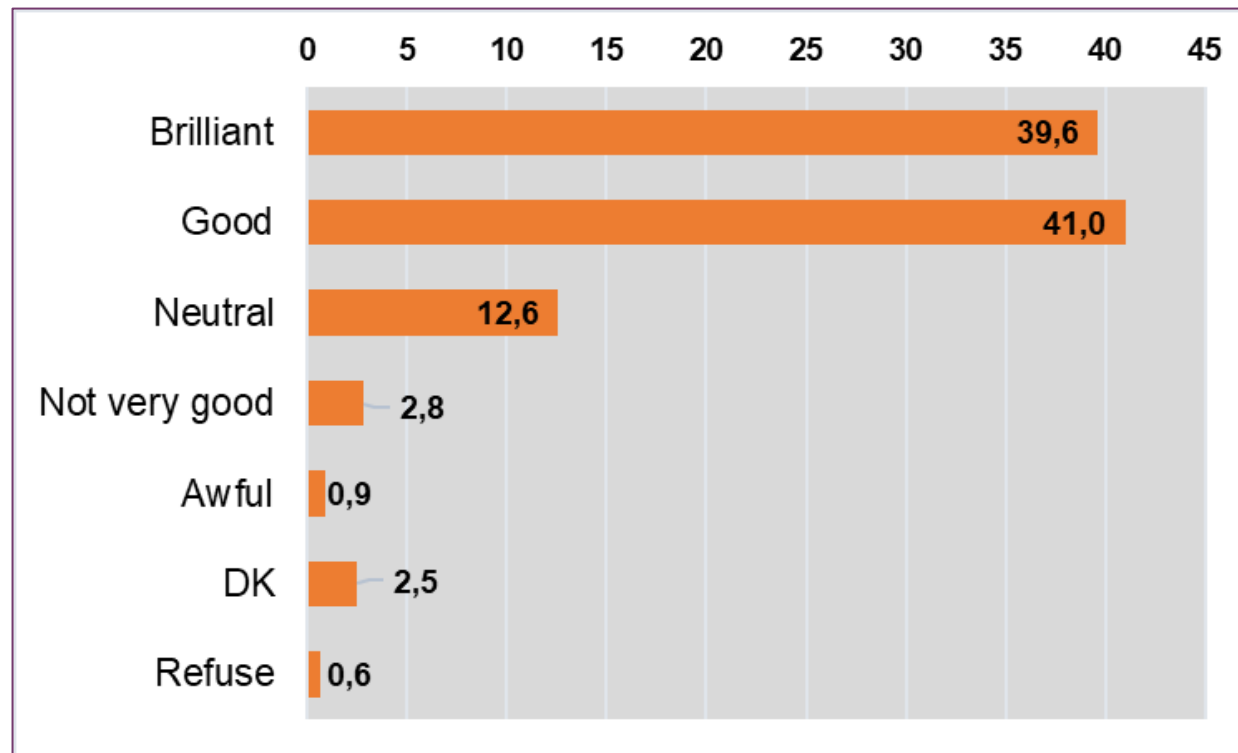
# The GUIDE pilot

- The COORDINATE project undertook a large-scale cohort pilot survey for GUIDE using a harmonised instrument and research design in selected European countries
- Croatia, Finland, France, Ireland and Slovenia (2023)
- We interviewed three groups:
  - 8-year old children;
  - parents of 8-year old children
  - parents of 9 month olds
- Around 250 respondents from each group in each country (app. 750 respondents per country)



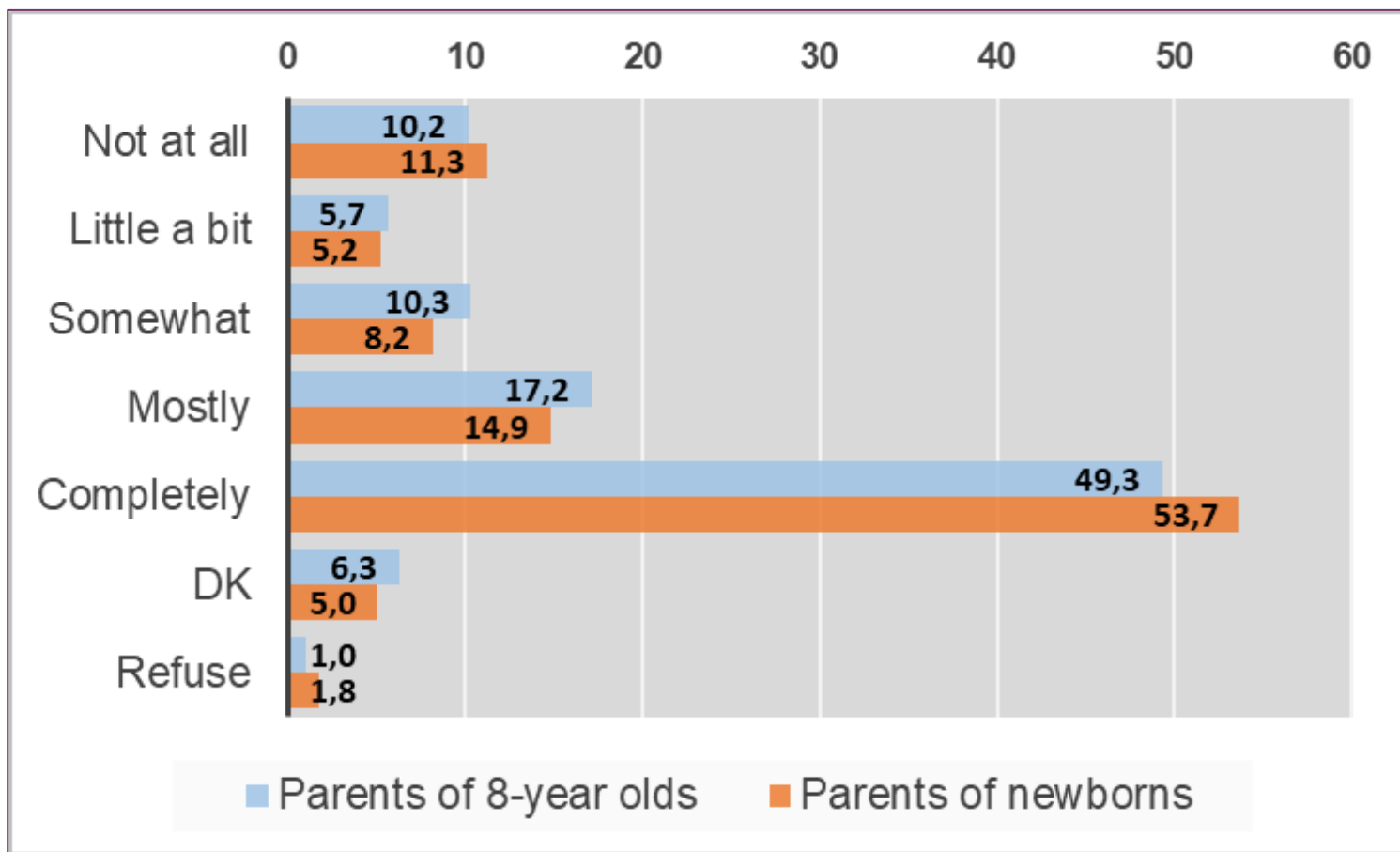
# Respondents' evaluation – children

*“How did you feel about participating in this interview and answering my questions?”*





# Respondents' evaluation – adults



*“How likely would you participate in an interview such as this one in the future, in a few years?”*





# Next steps



# ESFRI Roadmap



# ESFRI recognised survey research infrastructures



Survey of Health,  
Ageing &  
Retirement in  
Europe



European Social  
Survey



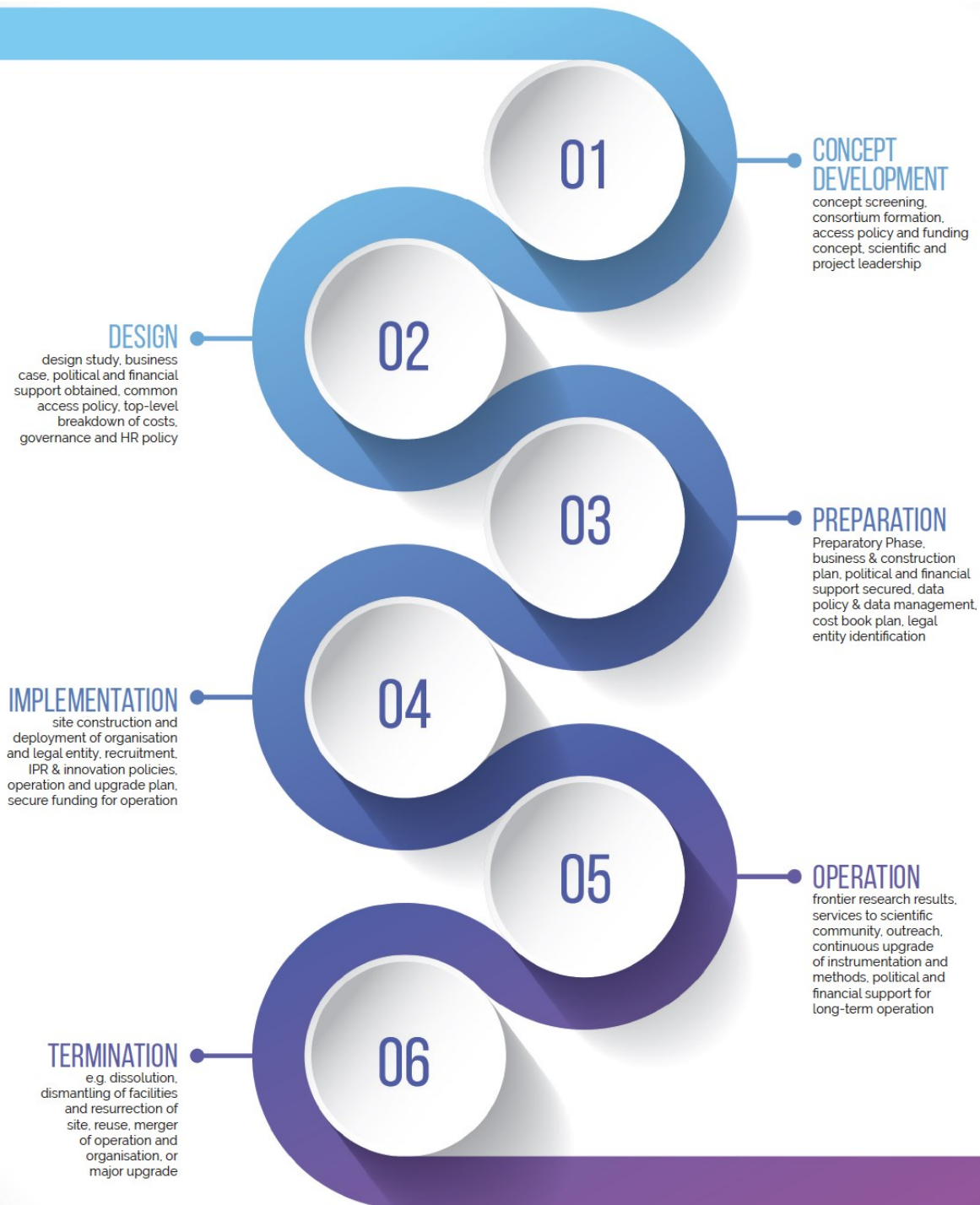
Generations &  
Gender  
Programme



Growing Up in  
Digital Europe



# ESFRI Roadmap



- **The GUIDE RI was awarded ESFRI Roadmap status in 2021**
- ESFRI is a self-regulated body, mandated in 2002 by the EU Council.
- ESFRI supports the development of selected pan-European research infrastructures of the highest quality through its Roadmap.
- Research Infrastructures on the ESFRI Roadmap have 10 years to develop (preparation and implementation phases)
- 11 new RIs included in the updated 2021 Roadmap including GUIDE and GGP
- Ring fenced funding opportunities
- Thematic infrastructural cluster projects

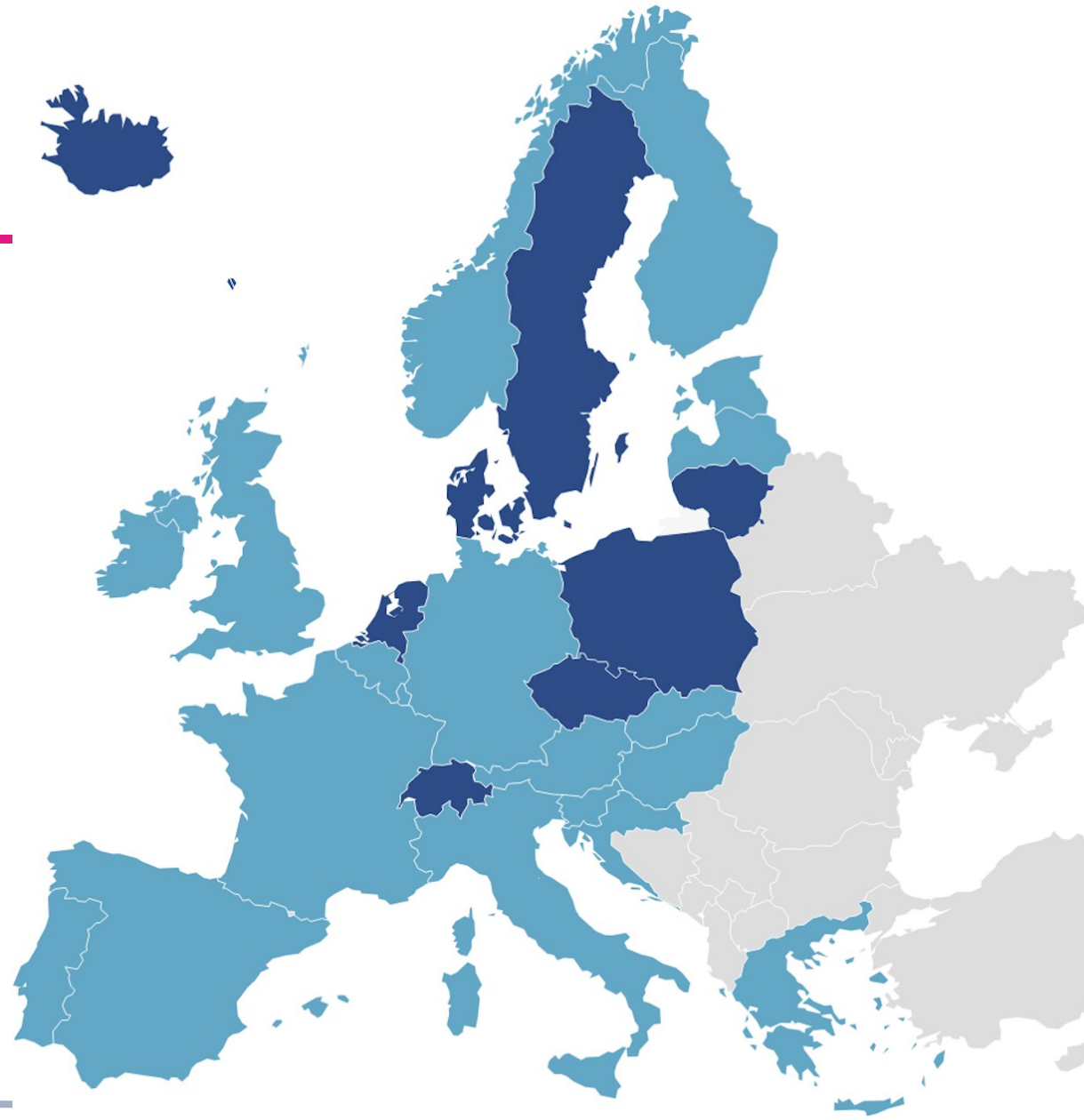


# GUIDE consortium



# GUIDE Consortium

20 Countries..  
and growing



Pilot survey  
2023

- Croatia
- Finland
- France
- Ireland
- Slovenia

2024

-Italy

2025

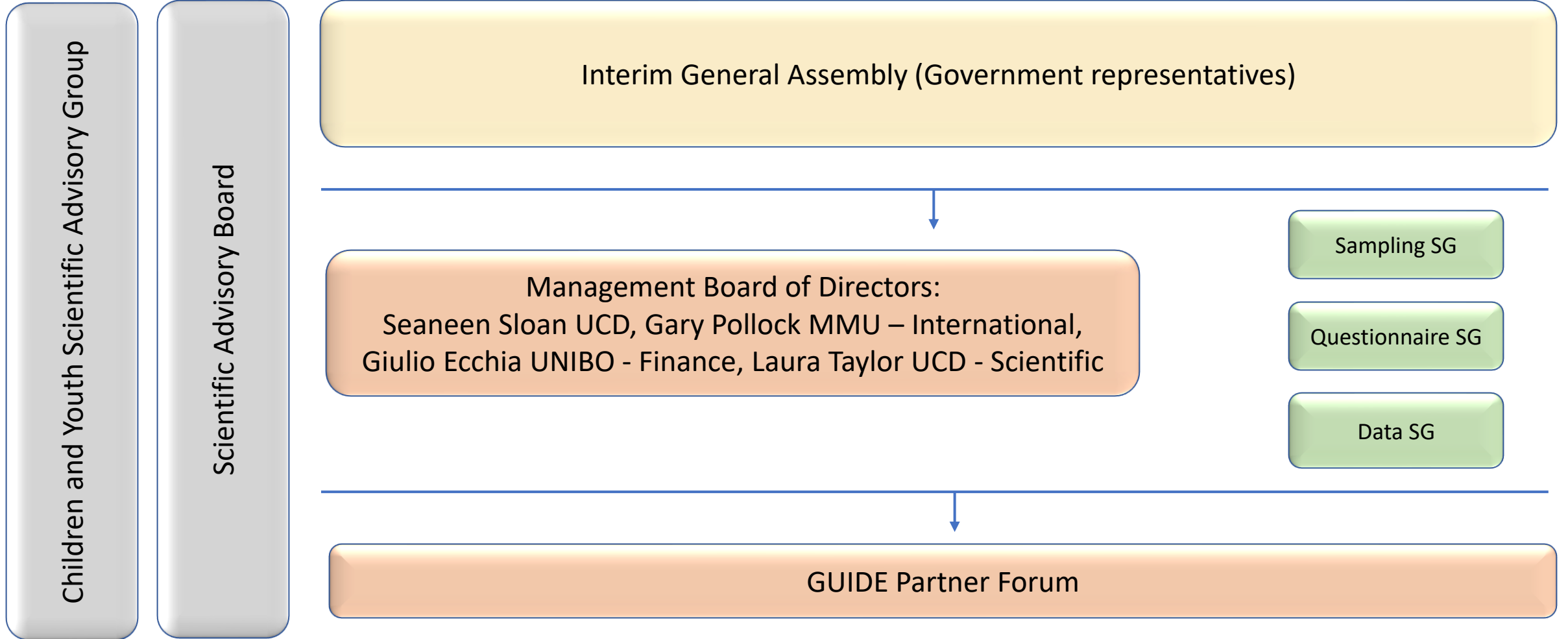
-Norway

+++





# GUIDE Governance Structure



Children and Youth Scientific Advisory Group

Scientific Advisory Board

Interim General Assembly (Government representatives)

Management Board of Directors:  
Seaneen Sloan UCD, Gary Pollock MMU – International,  
Giulio Ecchia UNIBO - Finance, Laura Taylor UCD - Scientific

Sampling SG

Questionnaire SG

Data SG

GUIDE Partner Forum

# GUIDE Scientific Groups

- Take forward the strategic discussions and make recommendations to the GUIDE Management Board
- Develop plans which will establish the timelines for activities up to the projected wave 1 of each cohort in 2027 and 2029





# SG 1: Sampling (including panel maintenance)

- **Lead:** Peter Lynn, University of Essex and Author of the original GUIDE sample plan

## Indicative issues we need answers for

- Main country contact for sample issues
- Type of sample anticipated
- Sample weighting strategy
- Estimated actual sample required for the target effective sample size
- Incentive strategy





# SG 2: Questionnaire development

(including mode of data collection and fieldwork processes)

- **Lead:** Toni Babarovic (IPI) and Nathalie Le Bouteillec (INED)

## Indicative issues we need answers for

- Questionnaire development and translation timeline
- Questionnaire content decisions
- Decisions on modes of data collection
- Policy on the use of minority languages in countries
- Consultation process with children and young people
- Nationally specific questions





## SG 3: Data (including agency procurement and contracts)

- **Lead:** Arnaud Wijnant (Centerdata), INED (Sandra Florian)

### Indicative issues we need answers for

- Who is the custodian of the sample identification information?
- Who purchases and manages the cloud based server?
- Once the sample is drawn, who uploads it to the software?
- What contact details are required?
- Scoping the ethics applications for all countries

